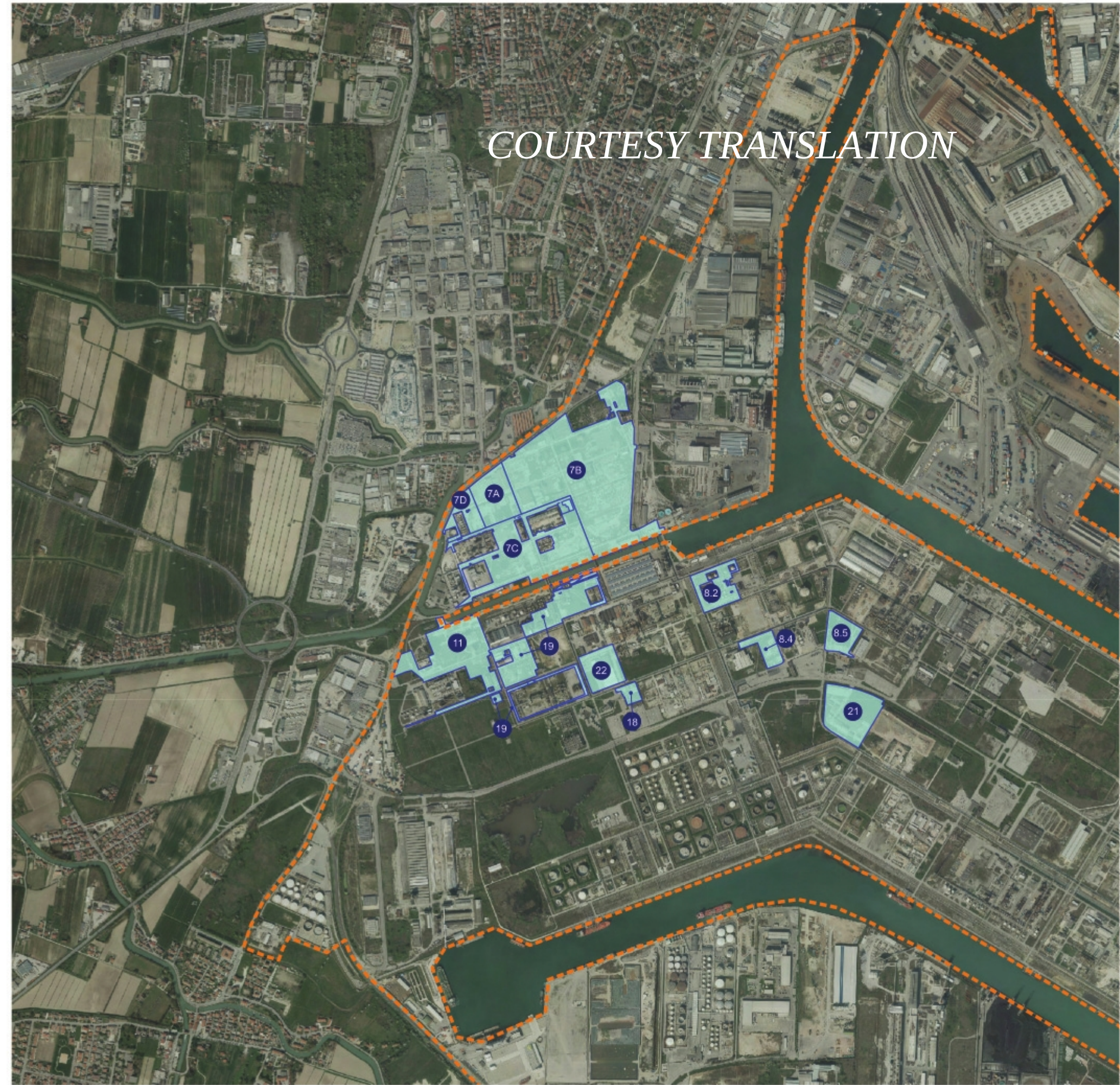


COURTESY TRANSLATION



PUBLIC NOTICE FOR EXPRESSION
OF INTEREST TO ACQUIRE
AREAS FOR ENTERPRENEURIAL
INITIATIVES WITHIN
THE SITE OF
NATIONAL INTEREST OF
VENEZIA - PORTO MARGHERA

ANNEX 1

This document is a brief illustration of the areas subject of the “Public Notice for expressions of interest to acquire areas for entrepreneurial initiatives within the Site of National Interest of Venezia - Porto Marghera. Given that the areas are owned by Syndial, the characteristics, consistency and specific environmental situation of each area will be examined from time to time between Syndial and the interested parties.

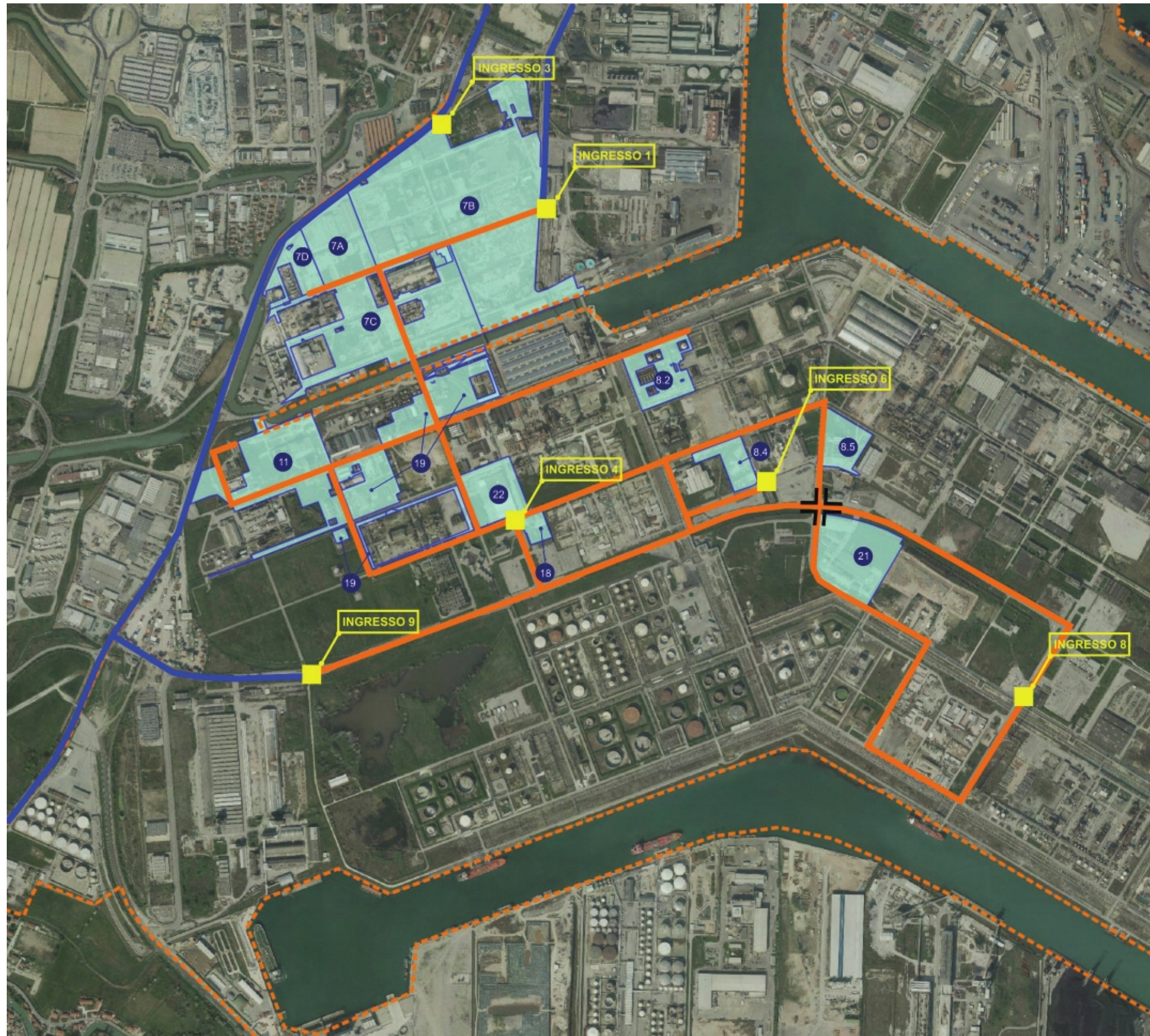
DENOMINATION OF THE AREAS











- AREA 7A - OLD PETROCHEMICAL
- AREA 7B - OLD PETROCHEMICAL
- AREA 7C - OLD PETROCHEMICAL
- AREA 7D - OLD PETROCHEMICAL
- AREA 8.2 - PSO/2
- AREA 8.4 - PORTION CTE - DEMI WATER
- AREA 8.5 - PORTION AS
- AREA 11 - FORMER MT2 - PRODUCTION OF METHACRYLATE SLABS
FORMER VEDRIL
- AREA 18 - DIRECTION
- AREA 19 - FORMER CAPROLACTAM - PA2
- AREA 21 - FORMER COMPOUND
- AREA 22 - PORTION AI - WAREHOUSE 5

The numbering and denomination proposed by Syndial was used to identify the individual areas (that is the same reported in the documents and materials sent to the competent bodies to obtain environmental authorizations).

VIABILITY AND ACCESS



-  public or public-use roads
-  factory roads
-  ACCESS 1 – regulates the accesses to the industrial plants from Via dell'Elettricità. It is composed by a gate and a reception.
-  ACCESS 3 – It is composed by a gate at present not garrisoned with pedestrian access.
-  ACCESS 9 – regulates the access to the Petrochemical plant from Via della Chimica. It is composed by a gate (that is closed, for security reasons from 18:00 to 5:30) and a reception at present not garrisoned.
-  ACCESSSES 4 and 8 – regulate the access to the industrial plants. The garrisoning is operated by S.P.M.. At the access the names of the visitors and the reason of the visit are registered and individual safety devices are delivered.
-  ACCESS 6 – Access dedicated to the Trucks. The garrisoning is operated by S.P.M. that also controls the goods accompanying-note.
-  Internal passage to the industrial plant viability to cross Via della Chimica. It is composed by an automatic barrier that hampers to enter or exit the industrial plant without passing through the garrisoned accesses.

DIMENSION OF THE AREAS

area denomination		cadastal surface sqm	surface in full property SYNDIAL	State property segments of canal-bank Lusore-Brentella	surface in full property SYNDIAL	presence of buildings	
AREA 7A - OLD PETROCHEMICAL	AREA 7A	VECCHIO PETROLCHIMICO	39.466	39.466		si	
AREA 7B - OLD PETROCHEMICAL	AREA 7B	VECCHIO PETROLCHIMICO	228.997	221.128	7.869	si	
AREA 7C - OLD PETROCHEMICAL	AREA 7C	VECCHIO PETROLCHIMICO	105.242	97.292	7.950	no	
AREA 7D - OLD PETROCHEMICAL	AREA 7D	VECCHIO PETROLCHIMICO	9.571	9.183	388	no	
AREA 8.2 - PSO/2	AREA 8.2	PSO/2	22.178	21.848		330	si
AREA 8.4 - PORTION CTE - DEMI WATER	AREA 8.4	PORZIONE CTE - ACQUA DEMI	13.573	13.173		400	no
AREA 8.5 - PORTION AS	AREA 8.5	PORZIONE AS	18.050	18.050			si
AREA 11 - FORMER MT2 - PRODUCTION OF METHACRYLATE SLABS FORMER VEDRIL	AREA 11	EX MT2 – PRODUZIONE LASTRE IN METACRILATO EX VEDRIL	64.595	53.787	10.808		no
AREA 18 - DIRECTION	AREA 18	DIREZIONE	5.789	5.092		697	si
AREA 19 - FORMER CAPROLACTAM - PA2	AREA 19	EX CAPROLATTAME – PA2	59.866	51.364	7.810	692	no
AREA 21 - FORMER COMPOUND	AREA 21	EX COMPOUND	43.842	35.851		7.991	si
AREA 22 - PORTION AI - WAREHOUSE 5	AREA 22	PORZIONE AI – MAGAZZINO 5	23.580	23.359		221	si
TOTALE			634.749	589.593	34.825	10.331	

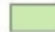
ENVIRONMENTAL SITUATION OF THE AREAS




Legenda

 Perimeter SIN Porto Marghera

ENVIRONMENTAL SITUATION

 remediation project approved

 remediation project approved (part), certificate implemented remediation (part)

 remediation project not approved

(source:http://www.bonifiche.minambiente.it/contenuti/Iter/Presentazione_30_06_2018_EC_03_12_2018.pdf)

ENVIRONMENTAL SITUATION OF THE AREAS

	area denomination		cadastral surface sqm	environmental situation source: http://www.bonifiche.minambiente.it/	environmental situation of the soils	
					Intervention by SYNDIAL	Intervention to be implemented
AREA 7A - OLD PETROCHEMICAL	AREA 7A	VECCHIO PETROLCHIMICO	39.466	remediation project approved (part) certificate implemented remediation (part)	surface scotic and safety-remediation (part)	surface scotic and safety-remediation (to be completed) and remediation in situ (part)
AREA 7B - OLD PETROCHEMICAL	AREA 7B	VECCHIO PETROLCHIMICO	228.997	remediation project approved (part) certificate implemented remediation (part)	surface scotic and safety-remediation (part)	surface scotic and safety-remediation (to be completed) and remediation in situ (part)
AREA 7C - OLD PETROCHEMICAL	AREA 7C	VECCHIO PETROLCHIMICO	105.242	remediation project approved	surface scotic and safety-remediation	surface scotic and safety-remediation (to be completed) and remediation in situ (part)
AREA 7D - OLD PETROCHEMICAL	AREA 7D	VECCHIO PETROLCHIMICO	9.571	remediation project approved (part) certificate implemented remediation (part)	surface scotic and safety-remediation	no intervention to be implemented
AREA 8.2 - PSO/2	AREA 8.2	PSO/2	22.178	remediation project approved	surface scotic and safety-remediation	remediation in situ
AREA 8.4 - PORTION CTE - DEMI WATER	AREA 8.4	PORZIONE CTE - ACQUA DEMI	13.573	remediation project approved	surface scotic and safety-remediation	no intervention to be implemented
AREA 8.5 - PORTION AS	AREA 8.5	PORZIONE AS	18.050	remediation project approved	no intervention implemented	surface scotic and safety-remediation
AREA 11 - FORMER MT2 - PRODUCTION OF METHACRYLATE SLABS FORMER VEDRIL	AREA 11	EX MT2 – PRODUZIONE LASTRE IN METACRILATO EX VEDRIL	64.595	remediation project approved	no intervention implemented	surface scotic and remediation in situ
AREA 18 - DIRECTION	AREA 18	DIREZIONE	5.789	remediation project approved	no intervention implemented	surface scotic
AREA 19 - FORMER CAPROLACTAM - PA2	AREA 19	EX CAPROLATTAME – PA2	59.866	remediation project approved	surface scotic (part)	surface scotic and remediation in situ
AREA 21 - FORMER COMPOUND	AREA 21	EX COMPOUND	43.842	remediation project not approved	no intervention implemented	surface scotic and remediation according to a project deposited at the Ministry
AREA 22 - PORTION AI - WAREHOUSE 5	AREA 22	PORZIONE AI – MAGAZZINO 5	23.580	remediation project approved	no intervention implemented	surface scotic
TOTALE			634.749			



AREA 7A - OLD PETROCHEMICAL



AREA 7B - OLD PETROCHEMICAL



AREA 7C - OLD PETROCHEMICAL



AREA 7D - OLD PETROCHEMICAL



AREA 8.2 - PSO / 2



AREA 8.4 - PORTION CTE - DEMI WATER



AREA 8.5 - PORTION AS



AREA 11 - FORMER MT2 - PRODUCTION OF METHACRYLATE SLABS FORMER VEDRIL



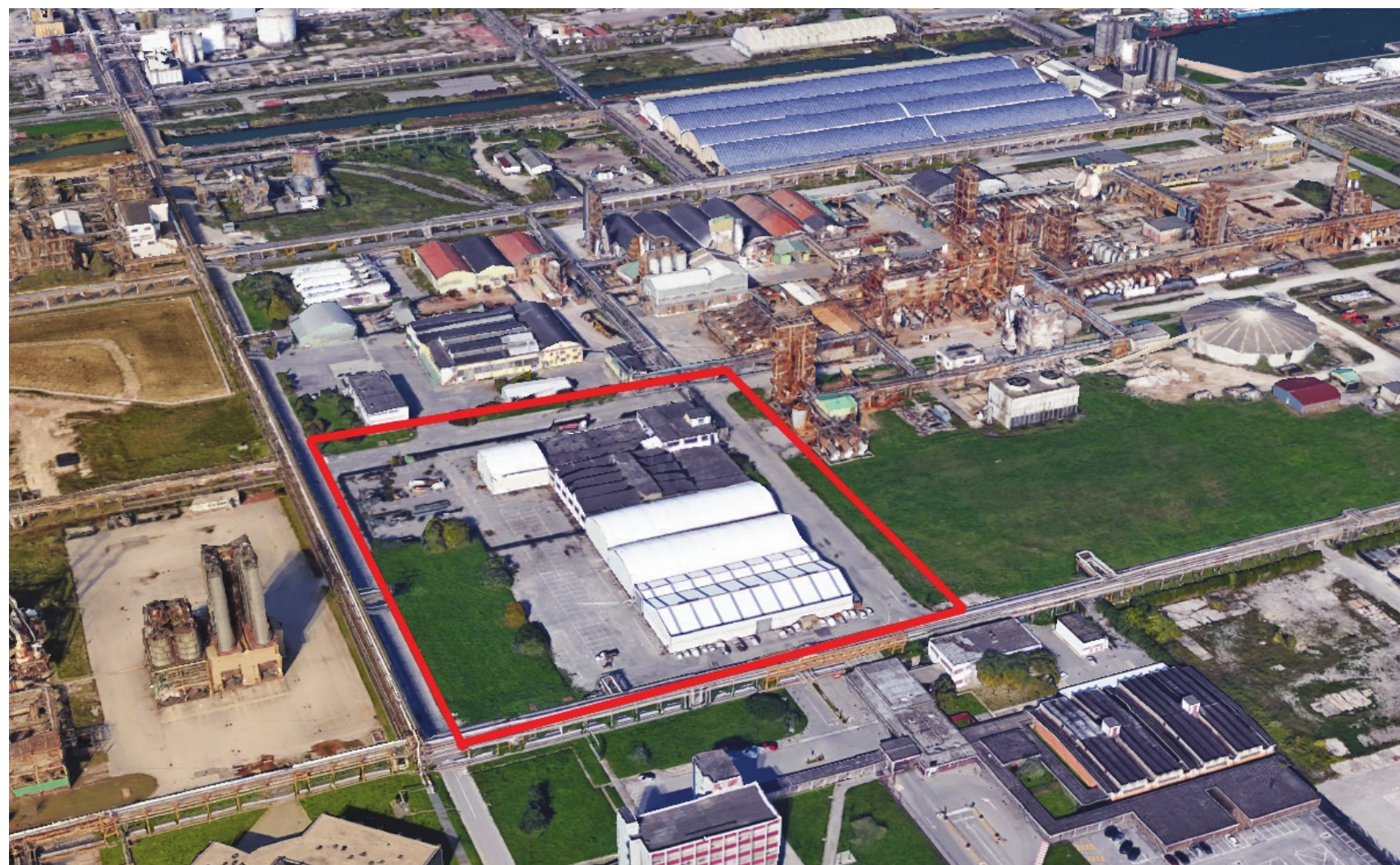
AREA 18 - DIRECTION



AREA 19 - FORMER CAPROLACTAM - PA2



AREA 21 - FORMER COMPOUND



AREA 22 - PORTION A1 - WAREHOUSE 5